

Mulburries

## Ashby Court , Hemel Hempstead, HP2 7QL

£995 Per month

- Not specified



# Ashby Court, Hemel Hempstead, HP2 7QL

A newly refurbished ground floor spacious apartment offered in immaculate condition.

The property accessed via a communal entrance benefits from: entrance hall leading to a large double bedroom, a new bathroom, large living room that provides access to the rear communal garden and a fitted kitchen with small storage room.

Locally you have a Sainsbury Superstore situated Appoximalty 0.3 miles away and convenient access to the M1 motor way Appoximalty 2 miles away along with other local amenities.

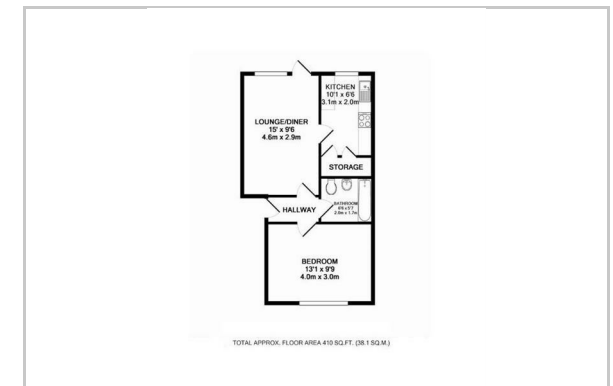
There is communal parking to the front of the property on a first come first basis and a rear communal garden.



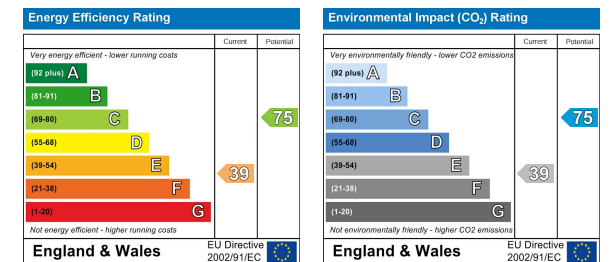
## Area Map



## Floor Plan



## Energy Efficiency Graph



These particulars, whilst believed to be accurate are set out as a general outline only for guidance and do not constitute any part of an offer or contract. Intending purchasers should not rely on them as statements of representation of fact, but must satisfy themselves by inspection or otherwise as to their accuracy. No person in this firm's employment has the authority to make or give any representation or warranty in respect of the property.