



Mulburries



TO LET

Flat 29, Swan Court Waterhouse Street, Hemel Hempstead, HP1 1DS

£1,450 Per month

- Recently refurbished
- Central town location
- Private balcony
- Lift access
- Internal communal bike store
- Two double bedroom 3rd floor apartment
- Open plan kitchen living dining
- Family bathroom + en-suite
- Overlooking picturesque communal water gardens
- Approximately 1 mile to Hemel Hempstead Main Line Train Station

## THE PROPERTY

Mulburries offer to the market in the heart of Hemel Hempstead, this charming third-floor apartment on Waterhouse Street offers a delightful blend of modern living and convenience. Spanning approximately 548 square feet, this recently refurbished property features two spacious double bedrooms, making it an ideal choice for couples, small families, or professionals seeking a comfortable home.

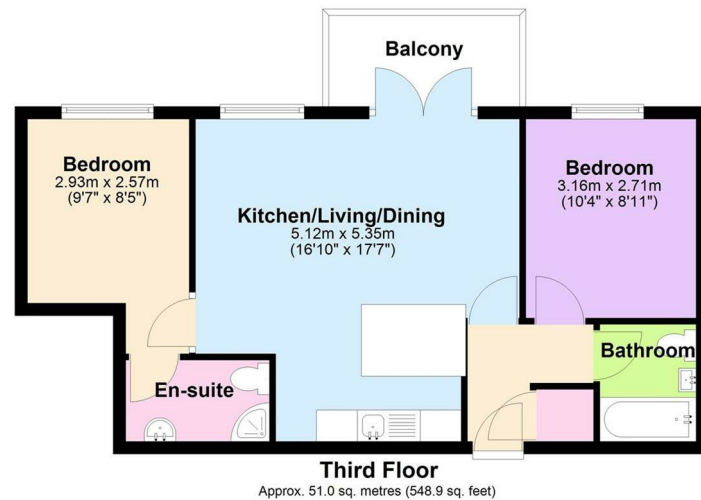
As you enter, you are welcomed by an open-plan kitchen, living, and dining area that creates a warm and inviting atmosphere, perfect for entertaining or relaxing after a long day. The living space extends to a private balcony, where you can enjoy views of the picturesque communal water gardens, providing a serene backdrop to your daily life.

The apartment boasts two well-appointed bathrooms, including a family bathroom and an en-suite, ensuring that both residents and guests have ample facilities. The property is chain-free, allowing for a smooth and efficient purchase process.

Additional features include lift access for ease of movement and an internal communal bike store, catering to those who enjoy cycling. The location is particularly advantageous, being approximately one mile from Hemel Hempstead Main Line Train Station, which offers excellent transport links to London and beyond.

This apartment is a rare find in a central location, combining modern amenities with the charm of communal gardens. Whether you are looking to invest or seeking a new home, this property is not to be missed.

## SITUATION



Total area: approx. 51.0 sq. metres (548.9 sq. feet)

Although Mulburries LTD ensures the highest level of accuracy, measurements of doors, windows and rooms are approximate and no responsibility is taken for error, omission or misstatement. These plans are for representation purpose only as defined by RICS code of measurement practice. No guarantee is given on total square footage of the property within this plan. The figure icon is for the initial guidance only and should not be relied on as a basis of valuation.  
Plan produced using PlanUp.

## Directions